

[www.shirewindows.co.uk](http://www.shirewindows.co.uk)

Tel: 0800 756 5339



# Windows That Won't Cost The Earth

Advanced Performance  
Windows and Doors



[www.shirewindows.co.uk](http://www.shirewindows.co.uk)

[www.shirewindows.co.uk](http://www.shirewindows.co.uk)

Tel: 0800 756 5339

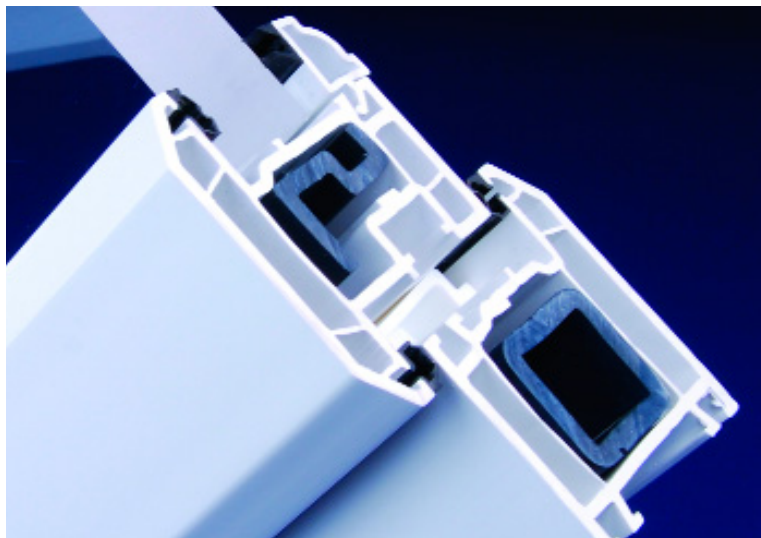
## Committed To Helping The Environment

The Best Windows  
Are Made From  
Profile 22

We are proud at Profile 22 to be fully committed to minimising our impact on the environment through continuous innovation and maximising the recycled content in our products. Discover within this brochure our environmental credentials such as 100% recycled composite material reinforcements, advanced performance windows and our recycling programme for post consumer and industrial waste PVC-U windows and doors.



Recycled Composite Material (RCM) is a reinforcement for PVC-U windows and doors manufactured from first generation post consumer waste PVC-U. Supplied as a substitute to either steel or aluminium sections, RCM is a cost effective alternative that offers superb benefits, while being fully sustainable.



**RCM**



This new reinforcement provides a closed loop to the recycling process, offering better thermal efficiency and has a 20%-30% higher weld strength than traditional reinforcement materials. RCM is a truly sustainable choice for Local Authorities, RSL's, Procurement Consortia and Contractors.

- Approved by WRAP Construction Products Guide.
- It doesn't corrode or rust.
- RCM has a screw pull out value greater than steel.
- RCM makes windows easier to install as it is lighter and windows can be carried more easily.
- The price of RCM is stable.
- RCM is less conductive than steel increasing thermal efficiency making it easier to achieve a higher energy rating.
- It is user friendly, easy to cut and clean, making it easier and safer to handle.

Further information on RCM is available on request.

# Closed Looped Recycling

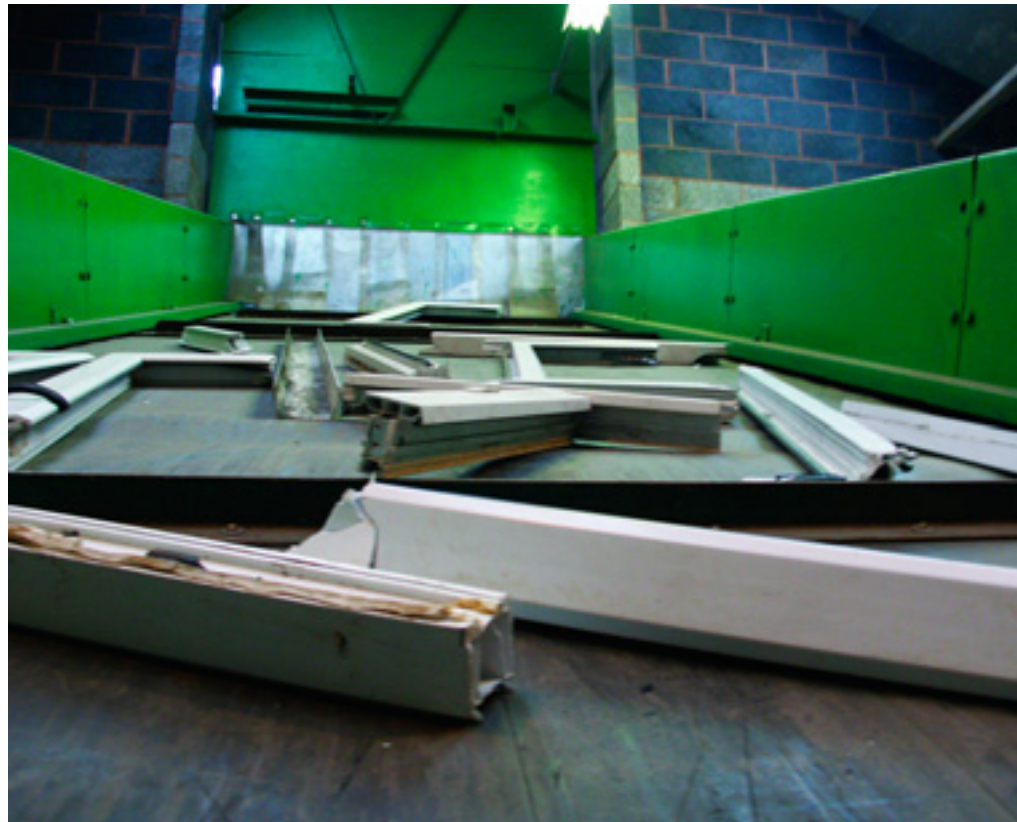
Profile 22 and its supply chain partners are committed to the environment and offering sustainable whole life costings for improved communities throughout every stage of production to site, through both its manufacturing processes and through its products.



With the PVC-U industry working towards recycling 100% of collectable waste to the Vinyl 2010 initiative deadline, at Profile 22 we are committed to ensuring we offer sustainable solutions for future generations.

As a Group company we have invested millions of pounds to create the UK's largest PVC-U recycling plant. Profile 22, through our sister company Dekura, can crush, recycle and re-process both post industrial and consumer waste into reusable granulate. (see right)

Our product range achieves a recycled content material far exceeding the BRE's target without impacting on product quality.





## Specification Support And Advice

Profile 22 is the UK's leading PVC-U window and door systems company boasting more than 30 years' experience in the social housing new build and refurbishment sector – making it ideally positioned to offer comprehensive unbiased advice and guidance.



- Contract management.
- Comprehensive specification information guide, including all product and legislation details available on CD.
- Extensive choice of low maintenance PVC-U windows, doors, curtain walling, ancillaries and SAFEWARE hardware.
- Designed and tested to meet all relevant industry standards and Building Regulations to ensure optimum quality and durability.
- Offers added value through its team of customer support and technical specialists.
- National network of manufacturers and installers with specific expertise in the social housing sector.



## Priority Support

Customer support is a priority. One call to Profile 22 and you are offered assistance for every stage of the project, including a no obligation consultation, specific design requirements, full specification, surveying and structural calculations, an extensive choice of quality and durable products - through both a field and office based technical support team. Telephone 01952 290910.



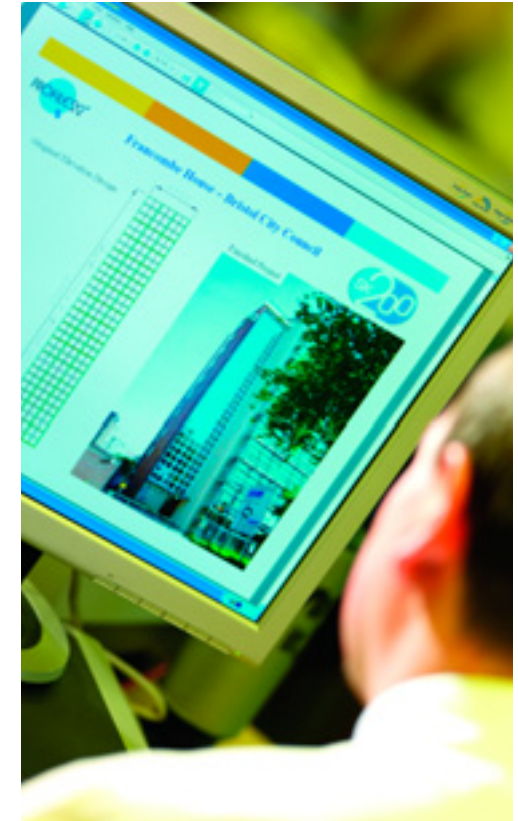
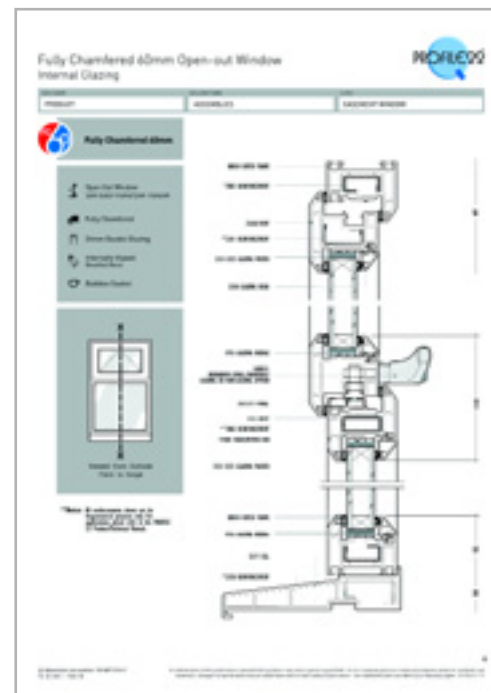
## Support Service

- Approved network of commercial fabricators and installers.
- Resident choice meetings.
- In-house window testing facility.

## Design Service

An in house design facility including:

- Window energy ratings.
- Structural calculations.
- Wind loading calculations.
- Load bearing calculations.
- Section details for specifications.
- Site visits to ensure adherence to the specification.



For More Information  
Please Contact Us:

**Profile 22 Systems**

Stafford Park 6, Telford  
Shropshire, TF3 3AT

**T : 01952 290910**

F : 01952 290460

W : [www.profile22.co.uk](http://www.profile22.co.uk)

E : [mail@profile22.co.uk](mailto:mail@profile22.co.uk)



Printed on 250gsm and 160gsm Take 2 offset 100% recycled and chlorine free

PROFILE 22 is an international PVC-U profile system supplied to local independent manufacturers and installers who contract to install windows, doors and conservatories. PROFILE 22 SYSTEMS cannot be held accountable for manufacture or installation by independent companies. All information in this publication is provided for guidance only and is given in good faith. As it is company policy to continually improve products, methods and materials, changes of specification may be made from time to time without prior notice. This statement does not affect your statutory rights. © PROFILE 22.